



**Transilvania
University
of Braşov**

INTERDISCIPLINARY
DOCTORAL SCHOOL



2024 INTERDISCIPLINARY DOCTORAL SCHOOL
ANNUAL REPORT

PREAMBLE

In its capacity as Institution organizing doctoral studies (IOSUD), Transilvania University of Braşov organizes doctoral studies in 24 accredited doctoral fields. These, integrated into the Interdisciplinary Doctoral School (SDI), cover a variety of branches of science – engineering, exact sciences, social sciences, humanities, arts, medicine, sports and physical education – which derive coherently from the specializations offered by the university's 18 faculties. The diversity of doctoral fields corresponds to the comprehensive nature of the university and favours inter-, multi-, and transdisciplinary doctoral research, one of the strategic directions of the university.

The Interdisciplinary Doctoral School is in continuous development, reflected in the constant increase in the number of doctoral fields, doctoral supervisors, and doctoral students.

At the same time, the international dimension of doctoral studies has increased significantly in recent years, with the

number of foreign doctoral students reaching 17.5% in 2024, and a dynamic of international scientific collaborations on the rise.

The quality of research – a strategic priority for the university – is an essential component of doctoral studies and is supported by various institutional funding programmes, awards for scientific performance, and mobility programmes for training and disseminating research results. Thus, 2024 will see a further increase in the number of publications by doctoral students in scientific journals indexed in important databases and, implicitly, greater international visibility.

Prof. Dr. Eng. Cătălin ALEXANDRU
Director of the Council for Doctoral Studies

Prof. Dr. Mona ARHIRE
Director of the Interdisciplinary Doctoral School

CONTENTS

3	▣ Doctoral fields
7	▣ Doctoral supervisors
23	▣ Doctoral students
29	▣ Doctoral theses defended
37	▣ Web of Science publications
53	▣ Salary increase and awards for scientific performance
59	▣ Internationalization
65	▣ Events



DOCTORAL FIELDS

In 2024, the Interdisciplinary Doctoral School comprised 24 accredited doctoral fields, of which 14 in engineering sciences and another 10 are in exact sciences, social sciences, arts and humanities, medical sciences, physical education and sports.

There are two types of doctoral programmes – scientific and professional – and they are offered both full time and part time, in Romanian and in international languages.

**ENGINEERING
SCIENCES**



**1 Mechanical
Engineering**

**Industrial
Engineering**

2

3

**Materials
Engineering**

**Electrical
Engineering**

4

5

**Electronics,
Telecom. and
Informational
Technologies**

**Systems
Engineering**

6

**Forest
Engineering**

7

8

**Engineering
and
Management**

9

**Computers and
Informational
Technology**

10

Forestry

**Mechatronics
and Robotics**

11

**Automotive
Engineering**

12

13

**Environmental
Engineering**

**Civil Engineering
and Building
Services**

14

**EXACT AND SOCIAL
SCIENCES; ARTS AND
HUMANITIES** ▶

**1 Computer
Sciences**

Mathematics

2

3 Marketing

4 Finances

Management

5

Medicine

7

Sociology

6

Philology

8

9 Music

**10 Science of
Sport and
Physical
Education**



DOCTORAL SUPERVISORS

On October 1, 204 doctoral supervisors were affiliated to the 24 doctoral fields, of which 144 UNITBV tenured staff, 49 retired supervisors and 11 external collaborators.

	Field	No. of doctoral supervisors	Tenured	Retired	Collaborators
1	Computers and Information Technology	4	2	1	1
2	Philology	10	8	2	
3	Finance	5	4		1
4	Computer Science	4	2	1	1
5	Automotive Engineering	3	3		
6	Materials Engineering	16	7	7	2
7	Environmental Engineering	3	3		
8	Systems Engineering	3	2	1	
9	Civil Engineering and Building Services	3	2		1
10	Electrical Engineering	5	2	3	
11	Electronics, Telecommunications and Informational Technologies	6	4	2	
12	Forest Engineering	7	6	1	
13	Industrial Engineering	17	16	1	
14	Mechanical Engineering	34	21	13	
15	Engineering and Management	9	5	4	
16	Management	3	3		
17	Marketing	9	8	1	
18	Mathematics	7	3	2	2
19	Mechatronics and Robotics	3	3		
21	Medicine	18	14	4	
21	Music	5	3	2	
22	Forestry	21	15	3	3
23	Sociology	4	4		
24	Science of Sport and Physical Education	5	4	1	
		204	144	49	11

DOCTORAL SUPERVISORS IN EACH FIELD

List valid on October 1, 2024

FIELD	FACULTY	SURNAME AND FIRST NAME	STATUS T/R/C*	NUMBER OF DOCTORAL STUDENTS
Computers and Information Technology	Electrical Engineering and Computer Science	Andonie Răzvan	R	1
		Moraru Sorin Aurel	T	10
		Popovici Dorin Mircea	C	3
		Pozna Claudiu Radu	T	2
Philology	Letters	Arhire Mona Brigitte	T	8
		Burada Marinela	T	2
		Chefneux Gabriela	T	2
		Gheorghe Mihaela	T	2
		Ignat Mihai	T	4
		Ilie Rodica Maria	T	6
		Matei Alexandru	T	4
		Podoabă Virgil Augustin	R	
		Puchianu Carmen Elisabeta	R	
		Săftoiu Răzvan Georgian	T	5

FIELD	FACULTY	SURNAME AND FIRST NAME	STATUS T/R/C*	NUMBER OF DOCTORAL STUDENTS
Finance	Economic Sciences and Business Administration	Baba Camelia Mirela	T	2
		Bărbuță-Mișu Nicoleta	C	
		Dincă Gheorghița	T	6
		Dincă Marius Sorin	T	4
		Răileanu - Szeles Monica	T	7
Computer Science	Mathematics and Computer Science	Ciurea Eleonor	R	
		Deaconu Adrian Marius	T	2
		Grozavu Nistor	C	
		Tăbîrcă Marius Sabin	T	3
Automotive Engineering	Mechanical Engineering	Duguleană Mihai	T	2
		Gîrbacia Florin	T	
		Șoica Adrian	T	5
Materials Science	Materials Science and Engineering	Balțeș Liana Sanda	T	
		Crețu Nicolae Constantin	R	2
		Cristea Daniel	T	2
		Crișan Aurel	R	

FIELD	FACULTY	SURNAME AND FIRST NAME	STATUS T/R/C*	NUMBER OF DOCTORAL STUDENTS
		Giacomelli Ioan	R	
		Machedon Pisu Teodor	T	1
		Mirza Rosca Juliana Claudia	C	1
		Munteanu Daniel	T	4
		Țierean Mircea Horia	T	1
		Vilela Vaz José Filipe	C	
		Samoilă Cornel	R	1
		Croitoru Cătălin	T	1
		Dumitrescu Georgeta Lucia	R	
		Duță-Capra Anca	T	
Environmental Engineering	Product Design and Environment	Pațachia Florica Sîlvia Cristina	R	
		Samoilă Cornel	R	1
		Vișa Maria	R	
		Andronic Luminița Camelia	T	2
		Eneșca Ioan Alexandru	T	
		Isac Luminița Anișoara	T	1

FIELD	FACULTY	SURNAME AND FIRST NAME	STATUS T/R/C*	NUMBER OF DOCTORAL STUDENTS
Systems Engineering	Electrical Engineering and Computer Science	Itu Lucian	T	6
		Moldoveanu Florin	R	
		Suciu Constantin	T	5
Civil Engineering and Building Services	Civil Engineering	Bărbulescu Alina	T	1
		Maftai Carmen Elena	T	1
		Prada Marcela Florina	C	1
Electrical Engineering	Electrical Engineering and Computer Science	Borza Paul Nicolae	T	4
		Fratu Aurel	R	4
		Helerea Elena	R	2
		Marinescu Corneliu	R	2
		Șerban Ioan	T	5
Electronics, Telecommunications & Informational Technologies	Electrical Engineering and Computer Science	Cotfas Daniel Tudor	T	8
		Cotfas Petru Adrian	T	2
		Ivanovici Laurențiu Mihail	T	3
		Ogrușan Petre Lucian	T	2
		Sandu Florin	R	
		Ursuțiu Doru	R	2

FIELD	FACULTY	SURNAME AND FIRST NAME	STATUS T/R/C*	NUMBER OF DOCTORAL STUDENTS
Forest Engineering	Furniture Design and Wood Engineering	Barbu Marius Cătălin	T	
		Câmpean Mihaela	T	1
		Cionca Marina Cristina	R	
		Coșoreanu Camelia	T	2
		Gurău Lidia	T	3
		Lunguleasa Aurel	T	2
		Timar Maria Cristina	T	2
Industrial Engineering	Technological Engineering and Industrial Management	Cioară Romeo	T	1
		Deaconescu Andrea Cătălina	T	1
		Deaconescu Tudor Ion	T	2
		Drăgoi Mircea Viorel	T	2
		Dumitrașcu Adela Eliza	T	3
		Morariu Cristin Olimpiu	T	
		Oancea Gheorghe	T	4
		Pârv Aurica Luminița	T	5
		Zaharia Sebastian Marian	T	2

FIELD	FACULTY	SURNAME AND FIRST NAME	STATUS T/R/C*	NUMBER OF DOCTORAL STUDENTS
Mechanical Engineering	Materials Science and Engineering	Cătană Dorin Ioan	T	
		Pascu Alexandru	T	4
		Stanciu Elena Manuela	T	
		Stoicănescu Maria	T	3
	Product Design and Environment	Starețu Ionel	T	
	Furniture Design and Wood Engineering	Rădulescu Loredana Anne-Marie	R	2
	Mechanical Engineering	Mogan Gheorghe	T	
	Mechanical Engineering	Antonyă Csaba	T	4
		Butnaru Silviu Luis	T	3
		Cerbu Camelia	T	
		Chiru Anghel	R	7
		Cofaru Corneliu	R	3
		Costiuc Liviu	T	
		Huminic Gabriela	T	1
		Itu Călin	T	1
		Lache Simona	T	3

FIELD

FACULTY

SURNAME AND
FIRST NAME

STATUS
T/R/C*

NUMBER OF
DOCTORAL
STUDENTS

Motoc Luca Dana

T

5

Radu Gheorghe Nicolae

R

Roșca Ioan Călin

T

5

Sandu Veneția

R

1

Scutaru Luminița

T

Stanciu Mariana Domnica

T

Szava Ioan

R

2

Teodorescu
Drăghicescu Horațiu

T

Vlase Sorin

R

1

Product Design
and Environment

Alexandru Cătălin

T

Baritz Mihaela Ioana

R

4

Cotoros Diana Laura

R

Cristea Luciana

T

2

Eftimie Elena Magdalena

T

Jaliu Codruța Ileana

T

Lateș Mihai Tiberiu

T

Roșca Ileana Constanța

R

3

FIELD	FACULTY	SURNAME AND FIRST NAME	STATUS T/R/C*	NUMBER OF DOCTORAL STUDENTS
Engineering and Management		Săulescu Radu Gabriel	T	
		Stroe Ioan	R	
		Velicu Radu Gabriel	T	
		Vișa Ion	R	
		Brătucu Gheorghe	R	
	Civil Engineering	Tierheimer Walter Wilhelm	T	1
		Ciofoaia Vasile	R	
		Năstase Gabriel	T	3
	Technological Engineering and Industrial Management	Boșcoianu Mircea	T	5
		Calefariu Gavrilă	R	8
		Florescu Adriana	T	1
		Lupulescu Nouraș Barbu	R	1
		Nedelcu Anișor	T	6
	Food and Tourism	Gaceu Liviu	T	1
		Gruia Romulus	R	
	Product Design and Environment	Repanovici Angela	T	8

FIELD	FACULTY	SURNAME AND FIRST NAME	STATUS T/R/C*	NUMBER OF DOCTORAL STUDENTS
Management	Economic Sciences and Business Administration	Săvescu Dan	R	6
		Dragomir-Pânzaru Cristina	T	1
		Foriș Tiberiu	T	1
Marketing	Economic Sciences and Business Administration	Sumedrea Silvia	T	1
		Băltescu Codruța Adina	T	3
		Brătucu Gabriel	T	4
		Constantin Cristinel Petrișor	T	5
		Duguleană Liliana	T	0
		Epuran Gheorghe	T	2
		Luca Florin Alexandru	C	1
		Neacșu Nicoleta Andreea	T	2
		Tescașiu Bianca	T	6
		Untaru Elena Nicoleta	T	2
Mathematics	Mathematics and Computer Science	Marin Marin	RP	4
		Miculescu Radu	T	2
		Mihai Adela Gabriela	C	3

FIELD	FACULTY	SURNAME AND FIRST NAME	STATUS T/R/C*	NUMBER OF DOCTORAL STUDENTS
Mechatronics and Robotics	Electrical Engineering and Computer Science	Pascu Mihai Nicolae	T	1
		Păltânea Radu	R	2
		Popa Ioan Lucian	C	1
		Voicu Nicoleta	T	4
		Cociaș Tiberiu Teodor	T	
		Grigorescu Mihai Sorin	T	4
		Măceșanu Gigel	T	1
Medicine	Medicine	Agache Ioana	T	2
		Badea Mihaela	T	6
		Badea Tudor Constantin	T	7
		Bobescu Elena	T	7
		Coman Gheorghe	R	1
		Dima Lorena	T	4
		Falup Pecurariu Cristian Gavril	T	8
		Falup Pecurariu Oana Gabriela	T	8

FIELD	FACULTY	SURNAME AND FIRST NAME	STATUS T/R/C*	NUMBER OF DOCTORAL STUDENTS
		Ifteni Petru	T	4
		Miclăuș Steliana-Roxana	T	7
		Mironescu Aurel Sandu	R	7
		Moga Marius Alexandru	T	10
		Moșoiu Daniela Viorica	T	6
		Nedelcu Laurențiu Dănuț	R	6
		Nemet Gabriela Codruța	P	4
		Rogozea Liliana Marcela	T	10
		Scârneciu Ioan	T	8
		Țânț Diana	T	7
Music	Music	Coroiu Petruța Maria	T	4
		Drăgulin Stela Doina	R	5
		Filip Ignac Csaba	T	4
		Oarcea Ioan	R	2
		Rucsanda Mădălina Dana	T	1
Forestry	Silviculture and Forest Engineering	Abrudan Ioan Vasile	T	5

FIELD	FACULTY	SURNAME AND FIRST NAME	STATUS T/R/C*	NUMBER OF DOCTORAL STUDENTS
		Badea Nicolae Ovidiu	C	6
		Borz Stelian Alexandru	T	12
		Câmpu Vasile Răzvan	T	8
		Clinciu Ioan	R	
		Covrig Ilie	C	2
		Curtu Alexandru Lucian	T	6
		Dinulică Florin	T	
		Ignea Gheorghe	R	
		Indreica Victor Adrian	T	2
		Ionescu Dan Traian	T	
		Nicolescu Valeriu Norocel	T	2
		Niță Mihai Daniel	T	7
		Petrișan Ion Cătălin	T	3
		Popa Bogdan	T	3
		Simon Dieter Carol	T	12
		Strâmbu Bogdan	C	

FIELD	FACULTY	SURNAME AND FIRST NAME	STATUS T/R/C*	NUMBER OF DOCTORAL STUDENTS
Sociology	Sociology and Communication	Tudor Gheorghe Marian	T	
		Vasilescu Maria Magdalena	T	1
		Vorovencii Iosif	T	4
		Buzea Carmen	T	3
		Csesznek Codrina	T	3
		Scârnci - Domnișoru Florentina	T	1
Science of Sport and Physical Education	Physical Education and Mountain Sports	Sorea Daniela	T	2
		Balint Lorand	T	2
		Bădău Dana	T	5
		Bondoc Ionescu Dragoș	R	
		Enoiu Răzvan Sandu	T	9
		Mândrescu Veronica	T	
				548

* T - tenured, R - retired, C - collaborators

Doctoral supervisors involved in the joint supervision of UNITBV doctoral students:



National joint supervision: 2

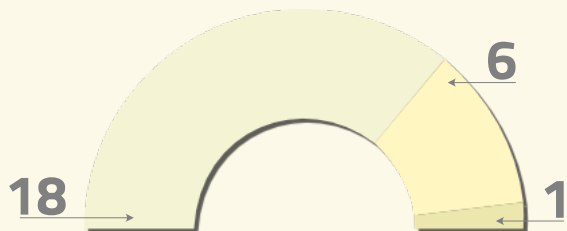


International joint supervision: 9

Secondary doctoral supervisors, within international joint supervision agreements:

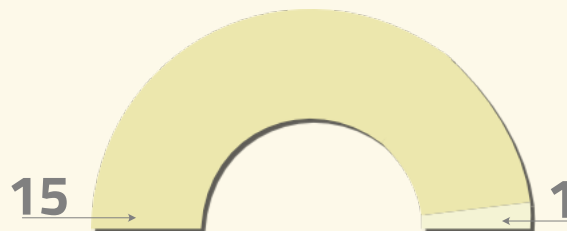
■ 12 (including 2 within the UNITA Alliance's CHORAL project)

Habilitations



25 habilitation certificates obtained at UNITBV by 18 UNITBV tenured staff, 6 members of other Romanian institutions, and 1 from abroad (Austria)

Affiliation to SDI



16 doctoral supervisors affiliated to SDI, of which 15 UNITBV tenured staff and 1 from another Romanian institution (RO)



DOCTORAL STUDENTS

DOCTORAL FIELD	MODE OF STUDY & NO. OF DOCTORAL STUDENTS*		TOTAL	SOURCE OF FUNDING		
				BUDGET, WITH SCHOLARSHIP	BUDGET, NO SCHOLARSHIP	TUITION FEE
Computers and Information Technology	F	14	16	3		11
	P	2				2
Philology	F	27	33	9	1	17
	P	6			4	2
Fianance	F	15	19	3	1	11
	P	4			2	2
Computer Science	F	4	5	2		2
	P	1			1	
Automotive Engineering	F	5	7	1		4
	P	2			2	
Materials Science	F	8	13	5		3
	P	5			3	2
Environmental Engineering	F	2	3	2		
	P	1			1	
Systems Engineering	F	10	11	5	2	3
	P	1				1
Civil Engineering and Building Services	F	2	3	1		1
	P	1			1	
Electrical Engineering	F	13	17	4		9
	P	4			3	1

DOCTORAL FIELD	MODE OF STUDY & NO. OF DOCTORAL STUDENTS*		TOTAL	SOURCE OF FUNDING		
				BUDGET, WITH SCHOLARSHIP	BUDGET, NO SCHOLARSHIP	TUITION FEE
Electronics, Telecommunications and Informational Technologies	F	19	22	5	3	11
	P	3			1	2
Forest Engineering	F	9	10	4	1	4
	P	1				1
Industrial Engineering	F	17	30	9	2	6
	P	13			7	6
Mechanical Engineering	F	35	53	7	6	22
	P	18			6	12
Engineering and Management	F	21	37	7	1	13
	P	16			9	7
Management	F	3	3	2		1
	P					
Marketing	F	20	25	7	2	11
	P	5			3	2
Mathematics	F	15	17	5	2	8
	P	2			1	1
Mechatronics and Robotics	F	4	5	2		2
	P	1			1	
Medicine	F	86	112	13	11	62
	P	26			11	15

DOCTORAL FIELD	MODE OF STUDY & NO. OF DOCTORAL STUDENTS*		TOTAL	SOURCE OF FUNDING		
				BUDGET, WITH SCHOLARSHIP	BUDGET, NO SCHOLARSHIP	TUITION FEE
Music	F	11	16	4	1	6
	P	5				5
Forestry	F	25	66	6		19
	P	41			15	26
Sociology	F	6	9	3	2	1
	P	3			3	
Science of Sport and Physical Education	F	9	16	4	2	3
	P	7			2	5
		548	548	113	113	322

* F = full time; P = part time

Foreign doctoral students

■ 96 - 17,5% of the total number of doctoral students

DOCTORAL FIELD	NO. OF DOCTORAL STUDENTS	SOURCE OF FUNDING		
		BUDGET*	TUITION FEE**	UNITBV/ SCHOLARSHIP***
Computers and Information Technology	8	1		7
Philology	5		1	4
Finance	6		1	5
Computer science				
Automotive Engineering				
Materials Science	3			3
Environmental Engineering				

DOCTORAL FIELD	NO. OF DOCTORAL STUDENTS	SOURCE OF FUNDING		
		BUDGET*	TUITION FEE**	UNITBV SCHOLARSHIP***
Systems Engineering				
Civil Engineering and Building Services	1			1
Electrical Engineering	6			6
Electronics, Telecommunications and Informational Technologies	11	1		10
Forest Engineering	2			2
Industrial Engineering	3	1		2
Mechanical Engineering	2		1	1
Engineering and Management	3		1	2
Management				
Marketing	7			7
Mathematics				
Mechatronics and Robotics	2			2
Medicine	13			13
Music	4		2	2
Forestry	16			16
Sociology	3	2		1
Science of Sport and Physical Education	1			1
	96	5	6	85

*Romanians Everywhere + Romanian State Scholarship + EU grant

**Tuition fee in RON + Tuition fee in Foreign currency

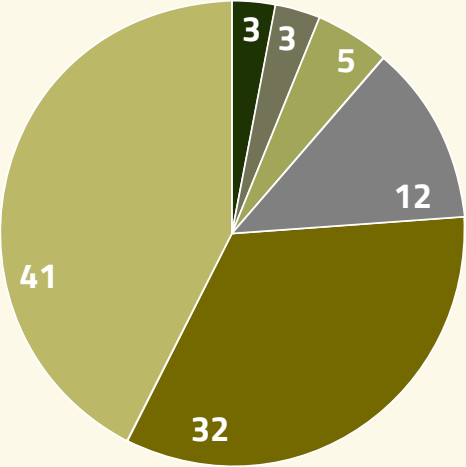
***TAS + International graduates + Tuition fee scholarship, including CHORAL

Source of funding for international doctoral students

41
UNITBV TAS
Scholarship

32
UNITBV
International
graduates

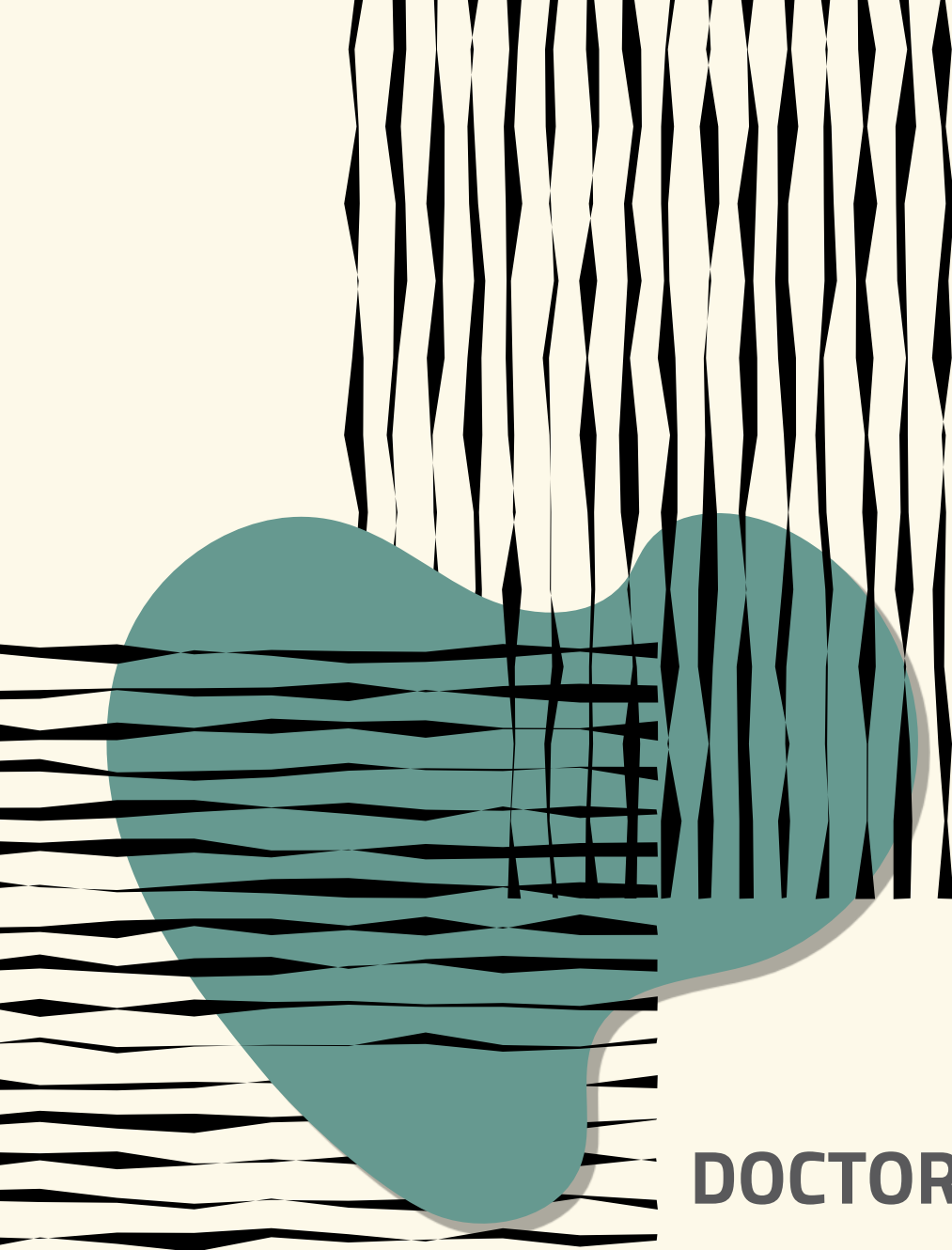
12
UNITBV tuition
scholarship



5
State budget (2 Romanians
Everywhere + 2 Romanian
State scholarship holders +
1 UE grant)

3
Tuition fee in
RON

3
Tuition fee in
foreign currency



**DOCTORAL THESES
DEFENDED**

In the 2023-2024 academic year, 76 doctoral theses were completed and defended, for which the title of doctor was awarded

- Doctoral theses written and/or defended in Romanian: **60**
- Doctoral theses written and/or defended in foreign languages: **16** (21%)

DOCTORAL FIELD	TOTAL	RO	EN	DE
1 Computers and Information Technology	3	2	1	
2 Philology	6	2	3	1
3 Finance	4	4		
4 Computer Science	2	2		
5 Automotive Engineering				
6 Materials Science	2	1	1	
7 Environmental Engineering				
8 Systems Engineering	2		2	
9 Civil Engineering and Building Services				
10 Electrical Engineering	1		1	
11 Electronics, Telecommunications and Informational Technologies	1	1		
12 Forest Engineering	2	2		
13 Industrial Engineering	3	3		
14 Mechanical Engineering	9	8	1	
15 Engineering and Management	4	3	1	
16 Management				
17 Marketing	3	2	1	
18 Mathematics	2	1	1	
19 Mechatronics and Robotics	1	1		
20 Medicine	11	11		
21 Music	10	10		
22 Forestry	8	5	3	
23 Sociology				
24 Science of Sport and Physical Educations	2	2		
TOTAL:	76	60	15	1

TITLE OF THESIS	DOCTORAL STUDENT'S NAME	SUPERVISOR'S NAME	DOCTORAL FIELD
CERCETĂRI PRIVIND ÎMBUNĂTĂȚIREA FABRICĂRII PULVERIZATOARELOR DE INECȚIE LA MOTOARELE CU ARDERE INTERNĂ	Popa Daniel	Morariu Cristin Olimpiu	Industrial Engineering
INTELIGENȚA ARTIFICIALĂ ÎN SPRIJINUL PERSOANELOR CU NEVOI SPECIALE	Bratu Dragoș Vasile	Moraru Sorin Aurel	Computers and Information Technology
EVOLUTIA DURERII ONCOLOGICE GREU TRATABILE SUB TRATAMENT INDIVIDUALIZAT: FACTORI PREDICTIVI	Marin (Mihăilescu -Marin) Maria Mirabela	Dima Lorena	Medicine
STUDIUL PROFILELOR TERMODINAMICE ÎN SISTEM IZOCORIC PENTRU CELE MAI IMPORTANTE SUBSTANȚE CRIOPREZERVANTE	Beșchea George Andrei	Năstase Gabriel	Mechanical Engineering
GENETIC DIVERSITY OF SCOTS PINE (PINUS SYLVESTRIS L.) IN MIDDLE SIBERIA *	Sheller Marina	Curtu Alexandru Lucian	Forestry
SYSTEMS AND APIS FOR AGGREGATION AND PRESENTATION OF RESEARCH DATA AND METADATA USING OPEN WEB PLATFORM	Ciubotaru (Constantinescu) Nicolae	Morariu Cristin Olimpiu	Industrial Engineering
TULBURĂRI DE SOMN ÎN BOALA PARKINSON	Diaconu Ștefania Roxana	Țiņț Diana	Medicine
STIL ȘI PERFORMANȚĂ INTERPRETATIVĂ ÎN CREAȚII CONCERTANTE PENTRU PIAN ȘI ORCHESTRĂ DE LUDWING VAN BEETHOVEN	Szöcs Botond Csaba	Drăgulin Stela	Music
NEW CONTRIBUTIONS TO FRACTAL INTERPOLATION THEORY *	Păcurar Maria Cristina	Miculescu Radu	Mathematics
CONDUCEREA ROBOȚILOR AUTONOMI UTILIZÂND TEHNICI DE INTELIGENȚĂ ARTIFICIALĂ	Ginerică Cosmin George	Grigorescu Sorin Mihai	Mechatronics and Robotics
ANALYSIS OF THE SOCIOECOLOGICAL SYSTEM OF YASUNI NATIONAL PARK: ON THE WAY TO ADAPTATIVE MANAGEMENT PLANNING *	Dominguez Gaibor Norma Isabel	Popa Bogdan	Forestry
ANALIZA FINANȚĂRII SERVICIILOR MEDICALE ȘI EFECTELE ASUPRĂ PERFORMANȚEI SISTEMULUI DE SĂNĂTATE DIN ROMÂNIA	Antohei Valentin Marian	Dincă Marius Sorin	Finanace
FACTORI PREDICTIVI AI DEPRESIEI ȘI ANXIETĂȚII ȘI IMPACTUL LOR ASUPRĂ EVOLUȚIEI PACIENTILOR CU LUPUS ERITEMATOS SISTEMIC	Eftimie (Duca) Liliana	Ifteni Petru	Medicine
EVALUAREA EFICACITĂȚII ȘI SIGURANȚEI EOLOSIRII RTMS (STIMULAREA MAGNETICĂ TRANSCRÂNIANĂ REPETITIVĂ) – O PROBLEMA ȚMERGENTĂ DE SĂNĂTATE PUBLICĂ ÎN TULBURĂRI DE ADAPTARE ȘI DEPRESIVE	Constantin Dan Alexandru	Liliana Rogozea	Medicine

TITLE OF THESIS	DOCTORAL STUDENT'S NAME	SUPERVISOR'S NAME	DOCTORAL FIELD
ASPECTE PRIVIND INFLUENȚA FACTORILOR BIOETICO-MEDICALI ȘI LEGISLATIVI ASUPRA CALITĂȚII VIEȚII PACIENȚILOR CU EPILEPSIE	Cioriceanu Ionuț Horia	Liliana Rogozea	Medicine
ANALIZA PROCESULUI DE ALOCARE A RESURSELOR FINANCIARE PUBLICE DIN PERSPECTIVA TEORIEI OPȚIUNII PUBLICE	Negri (Ungureanu) Camelia	Dincă Gheorghița	Fianance
ESG ȘI INFLUENȚA ACESTORA ASUPRA REZULTATELOR ECONOMICO-FINANCIARE ALE FIRMELOR	Vezeteu Cosmin Dănuț	Dincă Marius Sorin	Fianance
CERCETĂRI TEORETICE ȘI EXPERIMENTALE PRIVIND MANAGEMENTUL ACTIV AL PORTOFOLIILOR DE PROIECTE	Bâldea Ana Maria	Boșcoianu Mircea	Engineering and Management
CERCETĂRI PRIVIND FABRICAREA PIESELOR DIN MATERIAL COMPOZIT CU FIBRE SCURTE DE CARBON UTILIZÂND PROCEDEUL FDM	Blaj Mădălina Ioana	Oancea Gheorghe	Industrial Engineering
MANAGEMENTUL, CREȘTEREA ȘI PRODUCȚIA DUGLASULUI VERDE (PSEUDOTSUGA MENZIESII (MIRB.) FRANCO) ÎN FĂGETE DIN ROMÂNIA	Mihăilescu Gheorghe	Nicolescu Valeriu Norocel	Forestry
FANFARA CU SOLIST VOCAL ÎN CONTEXTE ARTISTICE, DIDACTICE ȘI DE PROGRES MUZICAL, CA REZULTAT AL AMPLIFICĂRII SONORE DIN SECOLUL XX	Ioan Cristina Mioara	Oarcea Ioan	Music
CONTRIBUȚII LA EVOLUȚIA SISTEMULUI-ORCHESTRĂ TOBE	Isac Vlad	Filip Ignac Csaba	Music
IPOSTAZA SOLISTICĂ A VIORII ÎN CREAȚIA MUZICALĂ EXTRAEUROPEANĂ	Boroș-Lazăr Maria Magdalena	Drăgulin Stela	Music
CONSTANTE ȘI VARIABLE SONORE ÎN INTERPRETAREA SONATELOR PENTRU PIAN ȘI VIOARĂ DE W.A. MOZART	Gavrilă (Manafu) Elena Mihaela	Drăgulin Stela	Music
COLECTOARE SOLAR TERMICE DE FORME DIVERSE IMPLEMENTABILE ÎN MEDIUL CONSTRUIT	Rusea Denisa Ioana	Vișa Ion	Mechanical Engineering
CORELAȚII CLINICO-PARACLINICE ȘI DE TRATAMENT ÎN EVOLUȚIA PACIENȚILOR CU SCHIZOFRENIE	Petric Paula Simina	Ifteni Petru	Medicine
CERCETĂRI PRIVIND UTILIZAREA UNOR ULEIURI ESENȚIALE PT. BIOPROTECȚIA ANTIFUNGICĂ A LEMNULUI - OPORTUNITĂȚI ȘI LIMITE ÎN CONTEXTUL EFICIENȚĂ VERSUS ECO-IMPACT	Pop Dana Mihaela	Timar Cristina Maria	Forest Engineering
IERARHIZAREA ESECURILOR ÎNȘERĂRII CAȚETERULUI VENOS PERIFERIC (CVP), DIN DUBLĂ PERSPECTIVĂ A ASISTENTULUI MEDICAL EFECTOR ȘI A PACIENTULUI IMPLICAT	Dulabă (Erzse) Adriana Magdalena	Nemet Codruța	Medicine

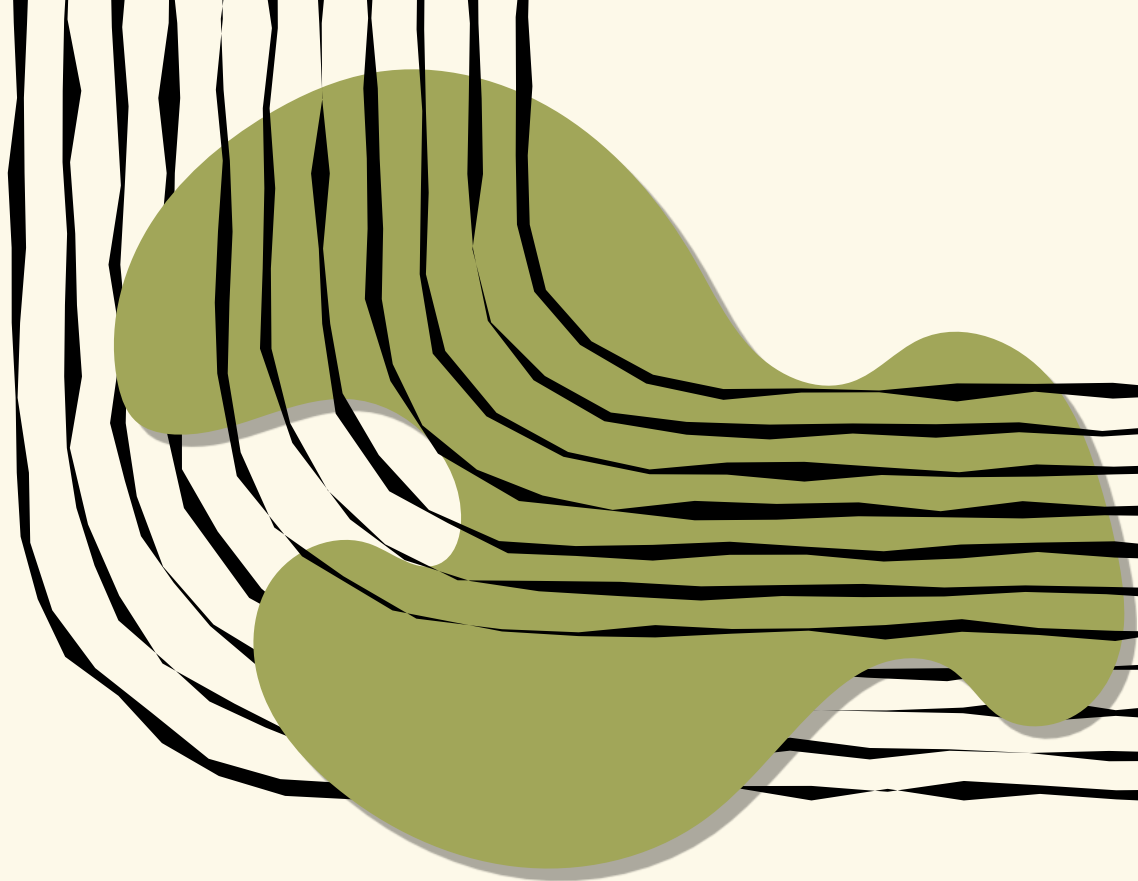
TITLE OF THESIS	DOCTORAL STUDENT'S NAME	SUPERVISOR'S NAME	DOCTORAL FIELD
CARACTERIZAREA BACTERIOLOGICĂ A UNUI SPITAL CLINIC JUDEȚEAN DE URGENTĂ, PREMISĂ A CONTROLULUI GERMENILOR CIRCULANȚI. OPORTUNITĂȚI ȘI SOLUȚII	Fluturu (Grecu) Ioana	Nemet Codruța	Medicine
UTILIZAREA TEHNOLOGIILOR GEOSPATIALE PENTRU MODELAREA HAZARDULUI LA INCENDII DE PADURE ȘI ANALIZA FACTORILOR FAVORIZANȚI	Lorenț Adrian	Badea Nicolae Ovidiu	Forestry
STUDIU COMPARATIV AL ALTERNATIVELOR TERAPEUTICE ÎN SIMPTOMATOLOGIA ȘI PATOLOGIA ASOCIATE MENOPAUZEI *	Bălan (Ciubotaru) Andreea	Dima Lorena	Medicine
MAGNETORESISTIVE MICROSENSORS FOR NON-CONTACTING CURRENT MEASUREMENT AND MAGNETIC NANOPARTICLES DETECTION *	Muşuroi Cristian Leonard	Helerea Elena	Electrical Engineering
DETECȚIA ȘI RĂSPUNSUL AUTOMATIZAT LA AMENINȚĂRI DE SECURITATE CIBERNETICĂ	Ilca Lucian Florin	Ogruțan Petre Lucian	Electronics, Telecom. and Informational Tech.
SISTEM DE PREHENSIUNE AUTOADAPTIV PENTRU PIESE SOLIDE CU FORME NEREGULATE	Frîncu Cezar	Stroe Ioan	Mechanical Engineering
INTEGRAREA FUZIUNII DE SENZORI ȘI A TEHNICILOR DE INTELIGENȚĂ ARTIFICIALĂ PENTRU PLĂNIFICAREA AVANSATĂ A TRASEULUI AUTOVEHICULELOR AUTONOME	Trăsnea (Sibișan) Bogdan	Pozna Claudiu	Computers and Information Technology
DRAMATURGIE, VIRTUOZITATE VOCALĂ ȘI ORNAMENTICĂ ÎN EPOCA BELCANTOULUI-ROLURI DE SOPRANĂ LIRICĂ ÎN OPERELE LUI GAETANO DONIZETTI	Băjea (Stanciu) Mihaela Elena	Coroiu Petruța	Music
SONATE PENTRU PIAN LA PATRU MÂINI ÎN CLASICISM. REPERTORIU, ASPECTE STILISTICE ȘI INTERPRETATIVE	Mureșan Valentin	Filip Ignac Csaba	Music
PERSPECTIVE STILISTICE, INTERPRETATIVE ȘI COMONISTICE ASUPRA MUZICII CONTEMPORANE LIBANEZE, DIN REPERTORIUL CAMERAL PENTRU FAGOT	Samoilă (Bălănuța) Elena Irina	Coroiu Petruța	Music
CERCETĂRI PRIVIND MODELAREA, SIMULAREA ȘI TESTAREA ELEMENTELOR DIN CONȘTRUCȚIA STRUCTURILOR METALICE CU PEREȚI SUBȚIRI	Dumbravă Florin	Cerbu Camelia	Mechanical Engineering
CERCETĂRI PRIVIND MODELAREA ȘI TESTAREA STRUCTURILOR DIN MATERIALE COMPOZITE HIBRIDE	Olăreanu (Ursache) Ștefania	Cerbu Camelia Hadăr Anton	Mechanical Engineering
AUTOMATED DATA ANALYSIS *	Moldovan Adrian Victor	Andonie Răzvan	Computers and Information Technology
TEHNICI ȘI TEHNOLOGII DE PROTECȚIE LA BRUIAJ ȘI ATACURI CIBERNETICE ÎMPOTRIVA SISTEMELOR DE SUPRĂVEGHERE ELECTRONICĂ	Meclea Mihai Alina	Boșcoianu Mircea	Engineering and Management

TITLE OF THESIS	DOCTORAL STUDENT'S NAME	SUPERVISOR'S NAME	DOCTORAL FIELD
STUDIUL FENOMENULUI DE NUCLEAȚIE ÎN REGIM IZOCOR	Cămpean Ștefan Ioan	Năstase Gabriel	Mechanical Engineering
LEVERAGING SELF-SUPERVISED LEARNING, SYNTHETIC DATA, AND TRUSTWORTHY ARTIFICIAL INTELLIGENCE FOR INNOVATIVE CANCER CARE *	Puiu Andrei	Suciu Constantin	Systems Engineering
DIAGNOSIS OF VASCULAR, VALVULAR AND INFLAMMATORY CARDIAC DISEASES USING DEEP NEURAL NETWORKS *	Hatfaludi Cosmin Andrei	Itu Lucian Mihai	Systems Engineering
TRADIȚIE ȘI INOVAȚIE ÎN LUCRĂRI DIN REPERTORIUL PENTRU FAGOT AL COMPOZITORILOR ROMANTICI DIN CULTURA MUZICALĂ NORD-EUROPEANĂ	Buciumaș Cristian Ioan	Coroiu Petruța	Music
THEATER UND SCHULE. SZENISCHES LERNEN UND DARSTELLENDES SPIEL IM DEUTSCHUNTERRICHT * *	Poiaru (Boieru) Larisa	Puchianu Carmen	Philology
AUTOARE DE CÂNTĂRI BISERICESTI ÎN MONAHISMUL ROMÂNESC (SEC. XIX-XX): MONAHILE EPIHARIA MOISESCU ȘI MAGDALINA NICOLESCU	Moldoveanu Cristina Georgeta	Coroiu Petruța	Music
METODE DE APROXIMARE FOLOSIND OPERATORI LINIARI ȘI POZITIVI	Meleșteu Alexandra Diana	Păltănea Radu	Mathematics
UMORUL ETNIC TRANSILVĂNEAN. O PERSPECTIVĂ LINGVISTICĂ	Tudor (Uretu) Noemi	Săftoiu Răzvan	Philology
THE INFLUENCE OF STRUCTURAL DESIGN ON ELECTRICAL, THERMAL, MECHANICAL AND TRIBOLOGICAL PROPERTIES OF TIN AND (Ti,AL)N COATINGS PREPARED BY REACTIVE MAGNETRON SPUTTERING *	Borșan Ioana	Munteanu Daniel	Materials Science
STANCE IN POLITICAL DISCOURSE DURING THE MIGRANT CRISIS OF 2015 *	Kolumban Kinga	Chefneux Gabriela	Philology
CERCETĂRI PRIVIND DINAMICA INSTALĂRII, CREȘTERII ȘI DEZVOLTĂRII SEMINȚISURILOR NATURALE ÎN ȘLEAURI DE LUNCĂ	Ghinescu Mugurel Nicolae	Niculescu Valeriu Norocel	Forestry
ÎMBUNĂȚĂȚIREA CAPACITĂȚILOR COORDINATIVE LA JUCĂTORII DE BASCHET JÚNIORI PRIN EXPERIMENTAREA UNOR PROGRAME DE EXERCITII SPECIFICE CARE UTILIZEAZĂ TEHNOLOGIA FITLIGHT	Steff Robert	Bădău Dana	Science of Sport and Physical Ed.
EXPERIMENTAREA UNOR PROGRAME COMBINATE DE EXERCITII PLIOMETRICE ȘI DE COORDONARE ÎN VEDEREA ÎMBUNĂȚĂȚIRII CAPACITĂȚII FIZICE ȘI TEHNICE A JÚNIORILOR U12 ÎN BASCHET	Radu Antonia	Bădău Dana	Science of Sport and Physical Ed.
CERCETĂRI PRIVIND UTILIZAREA UNEI PLATFORME SOFTWARE ÎN PROCESUL DE ÎNSTRUIRE ȘI CONSEMNAȚIE A ÎNSTRUIRII DIGITALE ÎN DOMENIUL SSM DIN CADRUL COMPANIILOR INDUSTRIALE	Mureșan Petru Iulian	Miloșan Ioan	Industrial Engineering

TITLE OF THESIS	DOCTORAL STUDENT'S NAME	SUPERVISOR'S NAME	DOCTORAL FIELD
VARIABILITATEA GENETICĂ A MOLIDULUI [PICEA ABIES (L.) KARST.] ÎN CULTURI COMPARATIVE DE PROVENIENȚE DIN ROMÂNIA	Alexandru Alin Mădălin	Curtu Alexandru Lucian	Forestry
ADAPTATION AND RESILIENCE OF NORWAY SPRUCE FOREST ECOSYSTEMS IN THE NORTHERN PART OF EASTERN CARPATHIANS IN THE CONTEXT OF CLIMATE CHANGE *	Popa Andrei	Badea Nicolae Ovidiu	Forestry
RESEARCH ON THE DYNAMIC ANALYSIS OF THE MILLING PROCESS BASED ON THE MODAL PERFORMANCES OF A DYNAMOMETER WITH DYNAMIC FORCE TRANSDUCERS *	Mupona Munyaradzi Innocent	Roșca Ioan Călin	Mechanical Engineering
MATERIALE COMPOZITE CU MATRICE DE OXID METALIC ȘI UMPLUTURĂ DE COMPUȘI CARBONICI CU PROPRIETĂȚI FOTOCATALITICE SOLAR- ȘI VIS-ACTIVE	Gheorghită Silvioara	Duță-Capra Anca	Materials Science
POWER IN THE CLASSROOM – LINGUISTIC MEANS OF EXPRESSING IT *	Beschieru Mihaela	Chefneux Gabriela	Philology
THE ROLE AND POTENTIAL OF VIRTUAL EXCHANGE IN THE DEVELOPMENT OF INTERCULTURAL COMMUNICATIVE COMPETENCE. THE CASE OF PRE-UNIVERSITY EDUCATION IN ROMANIA *	Tutunea Gabriela	Burada Marinela	Philology
CONSTRUCȚII CORELATIVE ÎN LIMBA ROMÂNĂ CONTEMPORANĂ	Prosan Timea	Gheorghe Mihaela	Philology
POLITICI ȘI STRATEGII DE MARKETING DIGITAL	Szakai Anita Cornelia	Brătucu Gabriel	Marketing
POSSIBILITĂȚI DE UTILIZARE A POLITICILOR ȘI STRATEGIILOR DE MARKETING ÎN DOMENIUL ECONOMIEI CIRCULARE	Mocanu Ana Alexandra	Brătucu Gabriel	Marketing
CERCETĂRI PRIVIND UTILIZAREA INTERFETELOR DE TIP CREIER-COMPUTER ÎN EXTINDEREA FUNCȚIONALITĂȚII SISTEMELOR BIO-MECATRONICE	Ruşanu Oana Andreea	Roșca Ileana Constanța	Mechanical Engineering
MARKETING STRATEGIES IN DEVELOPING INTERNATIONAL PARTNERSHIPS BETWEEN UNIVERSITIES *	Chen Zongsheng	Constantin Cristinel	Marketing
STUDII COMPARATIVE ALE LASERTERAPIEI ȘI TERAPIEI FARMACOLOGICE ÎN AFECȚIUNI INFLAMATORII ALE CAVITĂȚII BUCALE	Chira (Ciurăscu) Codruța Elena	Dima Lorena	Medicine
AFECȚAREA CARDIOVASCULARĂ ÎN CIROZA HEPATICĂ	Lupu Dragoș	Nedelcu Laurențiu Dănuț	Medicine
ANALIZA DINAMICII PAGUBELOR ȘI A CONFLICTELOR OM-URS GENERATE DE CONSERVAREA SPECIEI URSUS ARCTOS ÎN REGIUNEA DE DEZVOLTARE CENTRU A ROMÂNIEI	Anuțoiu Ana Gabriela	Ionescu Ovidiu	Forestry

TITLE OF THESIS	DOCTORAL STUDENT'S NAME	SUPERVISOR'S NAME	DOCTORAL FIELD
STUDIU PRIVIND REALIZAREA ÎMBINĂRILOR PENTRU SCAUNE CU AJUTORUL TEHNOLOGIEI DE IMPRIMARE 3D	Nicolau Antoniu	Coşereanu Camelia	Forest Engineering
CERCETĂRI PRIVIND ANALIZA MECANISMULUI DE VĂTĂMARE LA NIVEL ABDOMINAL ÎN CAZUL CONDUCĂTORULUI AUTO FEMEIE ÎNSĂRCINATĂ ÎN OPT SĂPTĂMÂNI	Thierheimer Alexandru	Alexandru Cătălin	Mechanical Engineering
STRATEGII DE DEZVOLTARE SUSTENABILĂ A AFACERILOR BAZATE PE ANALIZA INDICATORILOR FINANCIARI	Maxim Lucian Gabriel	Bărbuță - Mișu Nicoleta	Finanace
METODE GPU PENTRU CREȘTEREA PERFORMANȚEI COMPUTAȚIONALE ÎN TEORIA GRAFURILOR ȘI GENERAREA HĂRȚILOR	Cuza (Spiridon) Delia Elena	Tăbîrcă Marius Sabin	Computer Science
METODE INCREMENTALE ÎN REȚELE DINAMICE	Crăbăneanu (Majercsik) Luciana	Tăbîrcă Marius Sabin	Computer Science
MANAGEMENTUL INTEGRAT CALITATE-RISIC ÎN SISTEMELE DE FABRICAȚIE DIN INDUSTRIA ALIMENTARĂ FERMENTATIVĂ	Pădureanu (Aldea) Cristina	Nedelcu Anișor	Engineering and Management

Doctoral theses written and/or defended in *English/**German



WEB OF SCIENCE PUBLICATIONS

In 2024, doctoral students published **128** WoS-indexed articles and reviews, as follows:

- **114** articles and reviews – doctoral students and doctoral supervisors, as co-authors;
- **12** articles and reviews – doctoral students with other co-authors;
- **2** articles – doctoral students as sole authors.

DOCTORAL FIELD	NO. OF ARTICLES AND REVIEWS (DOCTORAL STUDENT & SUPERVISOR)	NO OF ARTICLES AND REVIEWS (DOCTORAL STUDENT AS SOLE OR CO-AUTHOR)
Computers and Information Technologies	5	1
Philology	1	
Finance	2	
Computer Science	1	
Automotive Engineering		
Materials Science	1	1
Environmental Engineering		
Systems Engineering	1	
Civil Engineering and Building Services		
Electrical Engineering	1	
Electronics, Telecommunications and Informational Technologies	7	
Forest Engineering	4	

DOCTORAL FIELD	NO. OF ARTICLES AND REVIEWS (DOCTORAL STUDENT & SUPERVISOR)	NO OF ARTICLES AND REVIEWS (DOCTORAL STUDENT AS SOLE OR CO-AUTHOR)
Industrial Engineering	14	
Mechanical Engineering	13	
Engineering and Management	9	
Management		
Marketing	1	
Mathematics	6	5
Mechatronics and Robotics	2	
Medicine	20	1
Music	5	
Forestry	27	6
Sociology	1	
Science of Sport and Physical Education		

* Publications with authors from multiple doctoral fields are included in the statistics for each field.

Doctoral supervisors published **389** WoS indexed articles and reviews in 2024.

DOCTORAL FIELD	TOTAL NO. OF SUPERVISORS (1 OCTOBER)	NO OF SUPERVISORS WITH WoS ARTICLES AND REVIEWS	NO OF WoS ARTICLES AND REVIEWS
Computers and Information Technologies	4	2	3
Philology	10	1	1
Finance	5	3	5
Computer Science	4	3	14
Automotive Engineering	3	3	5
Materials Science	16	8	23
Environmental Engineering	3	2	6
Systems Engineering	3		
Civil Engineering and Building Services	3	2	22
Electrical Engineering	5		
Electronics, Telecommunications and Informational Technologies	6	5	15
Forest Engineering	7	6	11
Industrial Engineering	17	10	13

DOCTORAL FIELD	TOTAL NO. OF SUPERVISORS (1 OCTOBER)	NO OF SUPERVISORS WITH WoS ARTICLES AND REVIEWS	NO OF WoS ARTICLES AND REVIEWS
Mechanical Engineering	34	15	51
Engineering and Management	9	5	11
Management	3	1	1
Marketing	9	6	13
Mathematics	7	5	53
Mechatronics and Robotics	3		
Medicine	18	15	72
Music	5	3	6
Forestry	21	17	43
Sociology	4	2	2
Science of Sport and Physical Education	5	4	19
	204	118	389

* Publications with authors from multiple doctoral fields are included in the statistics for each field.

List of articles and reviews indexed in Web of Science authored by doctoral students

ARTICLE TITLE	JOURNAL	2023 IMPACT FACTOR	TOTAL NO. OF AUTHORS	NO. OF UNITBV AUTHORS
Voronovskaja type theorem for some nonpositive Kantorovich type operators	Carpathian Journal of Matematics	1,400	1	1
Analyzing EU's Agricultural Sector and Public Spending under Climate Change	Sustainability	3,300	3	3
Theoretical and Experimental Research Concerning the Friction Forces Developed in Hydraulic Cylinder Coaxial Sealing Systems Made from Polymers	Polymers	4,100	4	4
On a composite obtained by a mixture of a dipolar solid with a Moore-Gibson-Thompson media	Boundary Value Problems	1,000	3	3
Manufacturing Process of Helicopter Tail Rotor Blades from Composite Materials Using 3D-Printed Moulds	Applied Sciences - Basel	2,500	2	2
RoboCoV Cleaner: An Indoor Autonomous UV-C Disinfection Robot with Advanced Dual-Safety Systems	Sensors	3,400	3	3
COVID-19 Detection and Diagnosis Model on CT Scans Based on AI Techniques	Bioengineering - Basel	3,800	5	5
Date-Palm-Based Sustainable Hybrid Composite with Cotton and Kevlar Fibre Participation	Applied Sciences -Basel	2,500	4	4
A Vision Dynamics Learning Approach to Robotic Navigation in Unstructured Environments	Robotics	2,900	5	4
Invasive behaviour of oak lace bug in forest ecosystems: a comparative analysis between thermophilous and mesophilous oak forests	Frontiers inForests and Global Change	2,700	4	2
First Identification of Trichinella pseudospiralis in a Golden Jackal (Canis aureus) in Romania	Pathogens	3,300	5	1
Characteristics of Forest Windthrow Produced in Eastern Carpathians in February 2020	Forests	2,400	4	2

ARTICLE TITLE	JOURNAL	2023 IMPACT FACTOR	TOTAL NO. OF AUTHORS	NO. OF UNITBV/ AUTHORS
Cost Valuation and Climate Mitigation Impacts of Forest Management: A Case Study from Piatra Craiului National Park, Romania	Land	3,200	9	4
Ballistic performance of monolithic rubber-ceramic composite armor	Journal of Composite Materials	2,300	2	2
Enhancing Security for IoT-Based Smart Renewable Energy Remote Monitoring Systems	Electronics	2,600	6	6
Using Adapted and Productive European Beech (<i>Fagus sylvatica</i> L.) Provenances as Future Solutions for Sustainable Forest Management in Romania	Land	3,200	4	2
Widest Path in Networks with Gains/Losses	Axioms	1,900	3	2
First Molecular Data of <i>Gongylonema pulchrum</i> (Rhabditida: Gongylonematidae) in European Fallow Deer <i>Dama dama</i> from Romania	Pathogens	3,300	7	2
Sympathetic NPY controls glucose homeostasis, cold tolerance, and cardiovascular functions in mice	Cell Reports	7,500	9	1
Portfolio Allocation, Risk Aversion, and Digital Literacy Among the European Elderly	Economics - The Open Access Open - Assesment E-Journal	0,800	2	2
Management of De Novo Carpal Tunnel Syndrome in Pregnancy: A Narrative Review	Journal of Personalized Medicine	3,000	5	5
The Potential for Sustainable Local Development through Digital Communication and Digitization of Intangible Cultural Heritage Resources in Făgăras Land, Romania	Sustainability	3,300	5	5
Determination of Rolling Radius by Analyzing the Impact of a Vehicle Wheel With a Fixed Obstacle	Ingineria Automobilului	0,100	4	4
Large Differences in Bud Burst and Senescence between Low- and High-Altitude European Beech Populations along an Altitudinal Transect in the SE-Carpathians	Forests	2,400	9	6
Inappropriate Use of Emergency Services from the Perspective of Primary Care Underutilization in a Local Romanian Context: A Cross-Sectional Study	Healthcare	2,400	7	7

ARTICLE TITLE	JOURNAL	2023 IMPACT FACTOR	TOTAL NO. OF AUTHORS	NO. OF UNITBV AUTHORS
Leaf-based characterization of intermediate forms between Cuban and Honduran mahogany	Notulae Botanicae Horti Agrobotanici	1,400	7	5
Reduction of electricity consumption in an AHU using mathematical modelling for controller tuning	Energy	9,000	5	4
Integrating monetary and non-monetary valuation for ecosystem services in Piatra Craiului national park, Southern Carpathians: a comprehensive approach to sustainability and conservation	Frontiers in Forests and Global Change	2,700	15	3
Diplopia in Movement Disorders: A Systematic Review of the Literature	Journal of Personalized Medicine	3,000	6	5
Identification and Molecular Characterization of Giant Liver Fluke (Fascioloides magna) Infection in European Fallow Deer (Dama dama) in Romania-First Report	Microorganisms	4,100	8	2
The Role of Wood Density Variation and Biomass Allocation in Accurate Forest Carbon Stock Estimation of European Beech (Fagus sylvatica L.) Mountain Forests	Forests	2,400	9	2
Accuracy of two LiDAR-based augmented reality apps in breast height diameter measurement	Ecological Informatics	5,800	3	2
Reducing Loneliness and Social Isolation of Older Adults Through Voice Assistants: Literature Review and Bibliometric Analysis	Journal of Medical Internet Research	5,800	12	4
How Can Cities Build Their Brand through Arts and Culture? An Analysis of ECoC Bidbooks from 2020 to 2026	Sustainability	3,300	2	2
Selected Physical and Mechanical Properties of Subfossil Oak (Quercus spp.) Compared to Aged Oak and Recent Oak	Applied Sciences -Basel	2,500	4	4
Enhancing Microgrid Operation Through Electric Vehicle Integration: A Survey	IEEE Access	3,400	3	2
Relational generalized iterated function systems	Chaos Solutions & Fractals	5,300	3	2
Wave propagation with two delay times in an isotropic porous micropolar thermoelastic material	Continuum Mechanics and Thermodynamics	1,900	4	3

ARTICLE TITLE	JOURNAL	2023 IMPACT FACTOR	TOTAL NO. OF AUTHORS	NO. OF UNITBV AUTHORS
Core Palliative Care Competencies for Undergraduate Nursing Education: International Multisite Research Using Online Nominal Group Technique	Journal of Palliative Care	1,300	10	3
The Impact of Fatigue on Sleep and Other Non-Motor Symptoms in Parkinson's Disease	Brain Sciences	2,700	10	7
Decomposing drivers in avian insectivory: Large-scale effects of climate, habitat and bird diversity	Journal of Biogeography	3,400	61	2
An analysis comparing fuel consumption and CO2 emissions of vehicles with conventional and hybrid propulsion under different driving cycles	Ingineria Automobilului	0,100	3	3
Virtual Reality Applications for Balance Rehabilitation and Efficacy in Addressing Other Symptoms in Multiple Sclerosis-A Review	Applied Sciences - Basel	2,500	4	4
Comprehensive study of the artificial intelligence applied in renewable energy	Energy Strategy Reviews	7,900	4	4
Integration of Terrestrial Laser Scanning and field measurements data for tree stem volume estimation: Exploring parametric and non-parametric modeling approaches	Annals of Forest Research	1,700	6	3
Trichinella spiralis Infecting Wild Boars in West, Southwest, and Northwest of Romania: Evidence of an Underrated Risk	Microorganisms	4,100	7	1
Transcriptomic evaluation of skin tape-strips in children with allergic asthma uncovers epidermal barrier dysfunction and asthma-associated biomarkers abnormalities	Allergy	12,900	16	2
Stylistic correlation between Serbian and Europea music in the 20th century	Studia Universitatis Babes-Bolyai Musica	0,000	2	2
Carbon Sequestration Dynamics in Peri-Urban Forests: Comparing Secondary Succession and Mature Stands under Varied Forest Management Practices	Land	3,200	7	1
Monitoring, Control and Optimization of Laser Micro-Perforation Process for Automotive Synthetic Leather Parts	Processes	2,800	3	3
The Efficiency of Binaural Beats on Anxiety and Depression-A Systematic Review	Applied Sciences - Basel	2,500	7	

ARTICLE TITLE	JOURNAL	2023 IMPACT FACTOR	TOTAL NO. OF AUTHORS	NO. OF UNITBV AUTHORS
Gear Hobs-Cutting Tools and Manufacturing Technologies for Spur Gears: The State of the Art	Materials	3,100	4	3
Review of forest ecosystem services evaluation studies in East Africa	Frontiers in Ecology and Evolution	2,400	5	4
Soil Compaction Induced by Three Timber Extraction Options: A Controlled Experiment on Penetration Resistance on Silty-Loamy Soils	Applied Sciences - Basel	2,500	3	3
Cerebral Computed Tomographic Findings in Schizophrenia: Relationship to Second-Generation Antipsychotics and Hyperprolactinemia	Healthcare	2,400	4	4
The Efficiency of Rehabilitation Therapy in Patients Diagnosed with Neurogenic Bladder: A Systematic Review	Medicina Lithuania	2,400	7	7
Main Trend Topics on Industry 4.0 in the Manufacturing Sector: A Bibliometric Review	Applied Sciences - Basel	2,500	3	2
The Electromagnetic Noise Level Influence on the Laser Micro-Perforation Process Specific to Automotive Components	Materials	3,100	3	3
A Review of Smart Photovoltaic Systems Which Are Using Remote-Control, AI, and Cybersecurity Approaches	Applied Sciences - Basel	2,500	3	3
Fantasy and Innovation in Deux Pieces Pour Clavecin, H. 244 by Bohuslav Jan Martinů	Studia Universitatis Babes-Bolyai Musica	0,000	3	3
The Expanding Thread of Ungulate Browsing-A Review of Forest Ecosystem Effects and Management Approaches in Europe	Forests	2,400	5	5
Timber Extraction by Farm Tractors in Low-Removal-Intensity Continuous Cover Forestry: A Simulation of Operational Performance and Fuel Consumption	Forests	2,400	4	4
Modern Dimensional Analysis Model Laws Used to Model Additive Manufacturing Processes	Applied Sciences - Basel	2,500	7	7
Tree Resilience Indices of Norway Spruce Provenances Tested in Long-Term Common Garden Experiments in the Romanian Carpathians	Plants - Basel	4,000	4	3

ARTICLE TITLE	JOURNAL	2023 IMPACT FACTOR	TOTAL NO. OF AUTHORS	NO. OF UNITBV AUTHORS
Reconceptualization of 'Light' as UP-Orientational Metaphor in War Narratives: A Trilingual Corpus-based Study	Philologica Jassyensia	0,100	2	2
Pneumatically Actuated Torsion Motor for the Transverse Rehabilitation of the Neck Joint	Actuators	2,200	3	3
Rapid Risk Assessment in Industry: Increasing Awareness of Worker Safety in Industrial Activities	Applied Sciences - Basel	2,500	4	4
Postural Risks in Dental Practice: An Assessment of Musculoskeletal Health	Sensors	3,400	6	5
Virtual Reality Associated with Functional Electrical Stimulation for Upper Extremity in Post-Stroke Rehabilitation: A Systematic Review	Applied Sciences - Basel	2,500	7	7
A novel Hybrid ant colony algorithm for solving the shortest path problems with mixed fuzzy arc weights	Alexandria Engineering Journal	6,200	4	4
A Systematic Literature Review on Automatic Computer Aided Process Planning	Acta Technica Napocensis Applied Math., Mechanics & Engineering	0,100	2	2
Complex potentials solutions for isotropic Cosserat bodies with voids	Boundary Value Problems	1,000	3	3
Exploring the effects of the assisted transfer of European beech (Fagus sylvatica L.) provenances in the Romanian Carpathians	Notuale Botanicae Horti Agrobotanici	1,400	5	3
Orthoplastic Reconstruction of Distal Tibia High-Energy Fractures Using a Circular External Fixator-A Systematic Review	Journal of Clinical Medicine	3,000	3	3
The Impact of Remote Ischemic Preconditioning on Inflammation Markers in Patients Undergoing Coronary Artery Bypass Grafting	Cardiology Research	1,400	4	4
Structural Characteristics of the Pine Stands on Degraded Lands in the South-East of Romania, in the Context of Climate Changes	Applied Sciences - Basel	2,500	6	1

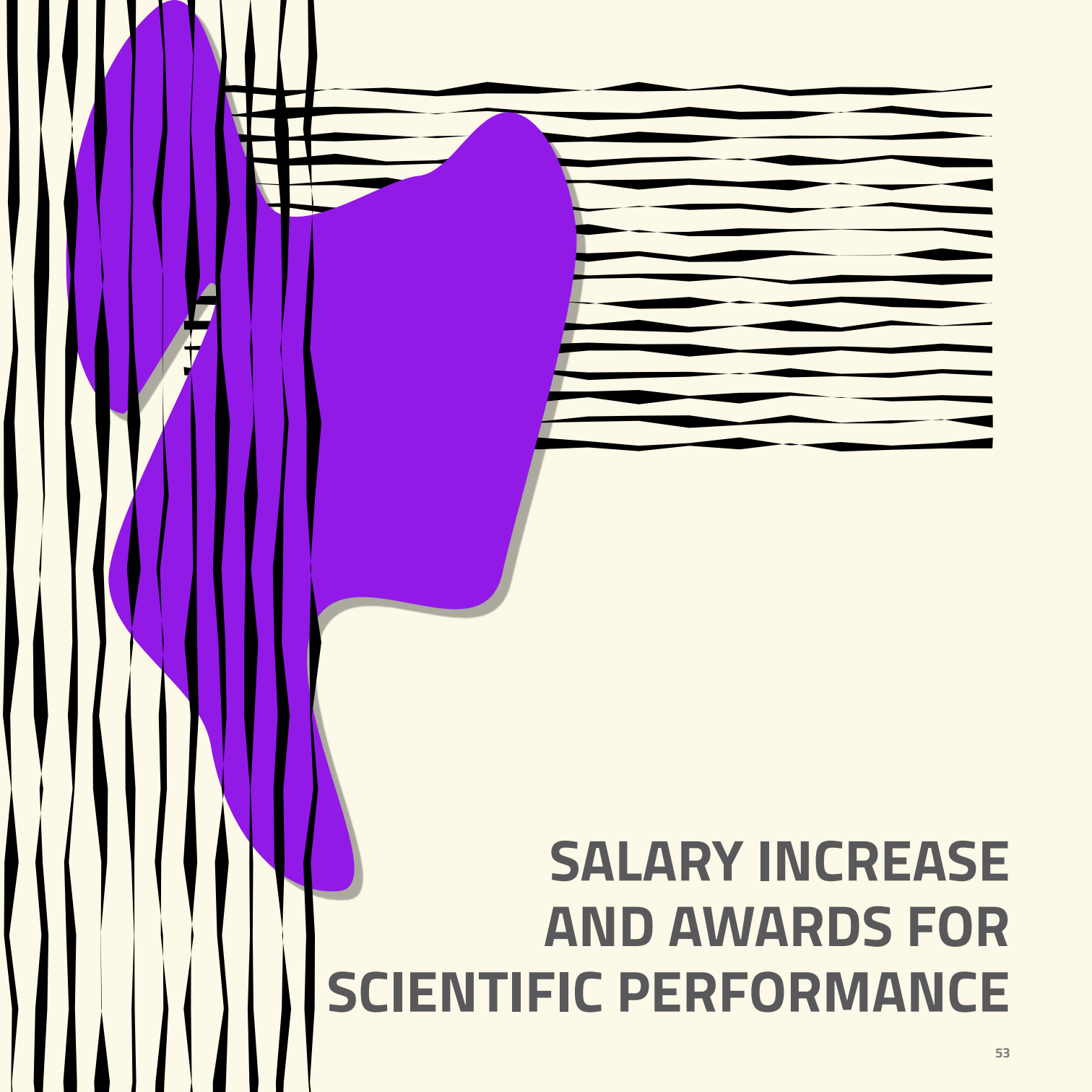
ARTICLE TITLE	JOURNAL	2023 IMPACT FACTOR	TOTAL NO. OF AUTHORS	NO. OF UNITBV AUTHORS
Ecological Restoration of Norway Spruce Stands Affected by Drying from Outside the Nature Range	Scientific Papers E-Land Reclamation Earth Observation	0,300	4	2
The impact of inflammatory and oxidative stress biomarkers on the sympathetic nervous system in severe coronary atherosclerosis	Frontiers in Cardiovascular Medicine	2,800	4	3
Geopolitical Risks and Stock Market Volatility in the SAARC Region	Economics The Open Access Open Assesment	0,800	3	3
An Estimation of the Energy Consumption of Electric, Hybrid and Classic Road Vehicles Starting from the Equivalent WLTP Driving Cycles	Inginerie Automobilului	0,100	6	6
The Proliferation of Artificial Intelligence in the Forklift Industry-An Analysis for the Case of Romania	Sustainability	3,300	5	5
Cardioprotection in coronary artery bypass graft surgery: the impact of remote ischemic preconditioning on modulating LOX-1 and SOD-1 to counteract oxidative stress	Frontiers in Cardiovascular Medicine	2,800	4	4
Surface Morphology and Chemical Changes of Maple and Beech Cut Through by CO2 Laser Under Different Angles Relative to the Wood Grain	Forests	2,400	3	3
The Potential of Intra-Articular Therapies in Managing Knee Osteoarthritis: A Systematic Review	Clinics and Practice	1,700	7	6
The Invariant Measure for a Countable Generalized Iterated Function System	Mediterranean Journal of Mathematics	1,100	1	1
A Note on the Infinitesimal Bending of a Rectifying Curve	Symmetry - Basel	2,200	3	2
On Lyapunov functions for random one-sided systems in terms of nonuniform exponential stability with applications	Mathematical Methods in the Applied Sciences	2,100	4	2
An IoT-based cognitive impairment detection device: A newly proposed method in older adults care-choice reaction time-device development and data-driven validation	Digital Health	2,900	14	4

ARTICLE TITLE	JOURNAL	2023 IMPACT FACTOR	TOTAL NO. OF AUTHORS	NO. OF UNITBV/ AUTHORS
Schrödinger connections: from mathematical foundations towards Yano-Schrödinger cosmology	Classical and Quantum Gravity	3,600	3	1
Living with giant ferns: An ethnobotanical investigation of scaly tree ferns (Cyatheaceae) in a global context	South African Journal of Botany	2,700	12	2
Design and Analysis of 3D Modeled Soft Pneumatic Actuators for use in Hand Rehabilitation Devices	Acta Technica Napocensis App. Math. Mechanics & Engineering	0,100	2	2
Giant adrenal myelolipomas: a literature review	Journal of Mind and Medical Sciences	1,600	6	5
Current Trends in Designing and Manufacturing of Electrical VTOL Aircraft	Acta Technica Napocensis App. Math. Mechanics & Engineering	0,100	2	2
Current Trend, Concepts and Challenges in Remanufacturing of the Industrial Products	Acta Technica Napocensis App. Math. Mechanics & Engineering	0,100	2	2
Improving Workplace Safety and Health Through a Rapid Ergonomic Risk Assessment Methodology Enhanced by an Artificial Intelligence System	Applied System Innovation	3,800	3	3
Ethical Principles in AI Use for Assessment: Exploring Students' Perspectives on Ethical Principles in Academic Publishing	Education Sciences	2,500	5	5
Analyzing the Accuracy of Satellite-Derived DEMs Using High-Resolution Terrestrial LiDAR	Land	3,200	3	3
Deep automatic soil roughness estimation from digital images	European Journal of Remote Sensing	3,700	4	4
Magnetic ordering exploration by study of the magnetostriction	Physica B-Condensed Matter	2,800	5	2
Exploring the relationship between characteristics of forest stands and the behaviour of <i>Lymantria dispar</i> (Lepidoptera: Erebidæ) from a temporal and spatial perspective	European Journal of Entomology	1,100	3	1
Deep learning automatically distinguishes myocarditis patients from normal subjects based on MRI	International Journal of Cardiovascular Imaging	1,500	7	3

ARTICLE TITLE	JOURNAL	2023 IMPACT FACTOR	TOTAL NO. OF AUTHORS	NO. OF UNITBV AUTHORS
Length-preserving biconnection gravity and its cosmological implications	Journal of Cosmology And Astroparticale Physics	5,300	5	1
Enlargement of Symmetry Groups in Physics: A Practitioner's Guide	Universe	2,500	3	1
No Future Growth Enhancement Expected at the Northern Edge for European Beech due to Continued Water Limitation	Global Change Biology	10,800	73	2
Transmissibility Analysis to Interaction Chamber of the ELI-NP Project Architecture for the Eliade Detector System	Acta Technica Napocensis App Math, Mechanics & Engineering	0,100	4	4
Shear Modulus Estimation of Fiber Composites Using Finite Element Method	Acta Technica Napocensis App Math, Mechanics & Engineering	0,100	5	4
EGB761 Trials for Mild-to-Moderate Dementia - What Have We Learned in the Past 18 years?	American Journal of Therapeutics	0,100	6	6
Hemodiafiltration with Self-Cleaning System	Acta Technica Napocensis App Math, Mechanics & Engineering	0,100	7	4
The Influence of Extra Weight on the Physiological Paramenters of the Circulatory System	Acta Technica Napocensis App Math, Mechanics & Engineering	0,100	5	5
Energy harvesting techniques for wireless sensor networks: A systematic literature review	Energy Strategy Reviews	7,900	5	5
The Evolution of Music Technology: General Elements / Evoluția tehnologiei muzicale: elemente generale	Information & Comm Technology in Musical Field	0,200	2	2
Reconceptualizing Musical Temporality: The Finite Sound and Perpetual Motion in Ligeti's Continuum	Studia Universitatis Babes-Bolyai Musica	0,000	2	2
Tradeoffs and limitations in determining tree characteristics using 3D pointclouds from terrestrial laser scanning: A comparison of reconstruction algorithms on European bech (Fagus sylvatica L.) trees	Annals of Forest Research	1,700	3	3

ARTICLE TITLE	JOURNAL	2023 IMPACT FACTOR	TOTAL NO. OF AUTHORS	NO. OF UNITBV AUTHORS
Is the Timing of Surgery a Sufficient Predictive Factor for Outcomes in Patients with Proximal Femur Fractures? A Systematic Review	Journal of Personalized Medicine	3,000	6	4
Exploring the association between adaptive and growth traits and within-individual genetic diversity in common beech (<i>Fagus sylvatica</i>)	Annals of Forest Research	1,700	12	5
Links between tree phenology and wood traits in sessile oak (<i>Quercus petraea</i> (Matt.) Liebl.)	Annals of Forest Research	1,700	4	4
Carbon Footprint - Important Driver of Climate Change Generated by the Food Industry	Sci. Papers E-land Reclamation Earth Obs. Surveying	0,300	5	5
Diallel crossing (10x10) in Swiss stone pine. Juvenile-adult correlations and genetic gain for predicting forward selection	Annals of Forest Research	1,700	4	1
3D Design and Printing of Medical Prosthetic - Technical and Economic Aspects	Acta Technica Napocensis App Math, Mechanics & Engineering	0,100	4	1
Optimization Algorithms in SDN: Routing, Load Balancing, and Delay Optimization	Applied Sciences - Basel	2,500	3	1
Study of Towbars Used in the Automotive Industry Using the Photoelastocimetry Method	Acta Technica Napocensis App Math, Mechanics & Engineering	0,100	5	5
Telemedicine networks for acute stroke: An analysis of global coverage, gaps, and opportunities	International Journal of Stroke	6,300	32	2
Research Regarding Sustainable Practices and Risk Management in Fermentative Industry	Acta Technica Napocensis App Math, Mechanics & Engineering	0,100	4	4
Developmental of a Cervical Flexibility Monitoring Device	Acta Technica Napocensis App Math, Mechanics & Engineering	0,100	7	7
Innovation in Wine Tourism Management: Promotion and Development in Romania	Acta Technica Napocensis App Math, Mechanics & Engineering	0,100	3	3

ARTICLE TITLE	JOURNAL	2023 IMPACT FACTOR	TOTAL NO. OF AUTHORS	NO. OF UNITBV AUTHORS
Application of Quality Management Tools in the Use of Platforms	Acta Technica Napocensis App Math, Mechanics & Engineering	0,100	3	3
Red Fox Population Dynamics in Romania: Implications for Wildlife Management	Revista Română de Medicină Veterinară	0,300	2	2
CyberCortex.AI: An AI-based operating system for autonomous robotics and complex automation	Journal of Field Robotics	4,200	2	2

An abstract graphic design featuring two large, overlapping, irregular purple shapes on the left side. To the right of these shapes is a rectangular area filled with horizontal black and white wavy lines, resembling a zebra print. The background is a solid light cream color.

SALARY INCREASE AND AWARDS FOR SCIENTIFIC PERFORMANCE

In 2024, **113** doctoral supervisors received salary increases as follows:

- 10% for publishing WoS articles: **112** doctoral supervisors
- 15% for publishing WoS articles and coordinating doctoral theses written and/or defended in foreign languages: **1** doctoral supervisor

DOCOTRAL FIELD	TOTAL NO. OF SUPERVISORS WITH SALARY INCREASE	NO. OF SUPERVISORS WITH 10% INCREASE	NO. OF SUPERVISORS WITH 15% INCREASE
Computers and Informational Technology	2	2	
Philology	3	3	
Finance	4	4	
Computer Science	2	2	
Automotive Engineering	1	1	
Materials Science	9	9	
Environmental Engineering	1	1	
Systems Engineering	1	1	
Electric Engineering	3	3	
Electronics, Telecommunications and Informational Technologies	5	4	1
Forest Engineering	5	5	
Industrial Engineering	11	11	
Mechanical Engineering	15	15	

Engineering and Management	4	4	
Marketing	7	7	
Mathematics	7	7	
Mechatronics and Robotics			
Medicine	13	13	
Music	3	3	
Forestry	11	11	
Sociology	3	3	
Science of Sport and Physical Education	3	3	
	113	112	1

AWARDS FOR DOCTORAL STUDENTS' SCIENTIFIC PERFORMANCE

In 2024, **80** doctoral students received awards for publishing WoS-indexed articles. The total amount made available to doctoral students is 117,400 lei.

DOCTORAL FIELD	NO. OF DOCTORAL STUDENTS AWARDED FOR WOS ARTICLES	AMOUNT AVAILABLE FOR WOS ARTICLES
Computers and Informational Technology	2	1356
Finance	5	15710
Computer Science	1	298
Materials Science	2	1023
Systems Engineering	4	3569
Electric Engineering	2	3373
Electronics, Telecommunications and Informational Technologies	4	5069
Forest Engineering	4	10096
Industrial Engineering	4	6093
Mechanical Engineering	9	11685
Engineering and Management	1	1096
Mathematics	4	10072
Medicine	22	20948
Forestry	14	23506

Sociology	1	1124
Science of Sport and Physical Education	1	2383
	80	117400



INTERNATIONALIZATION

The number of foreign doctoral students increased significantly in 2024, reaching 96, from 28 countries, representing 17.5% of the total number of doctoral students.





The Interdisciplinary Doctoral School of Transilvania University of Braşov is a member of the UNITA DOCTORAL NETWORK alongside other similar structures from the other 12 partner universities of the UNITA Alliance.

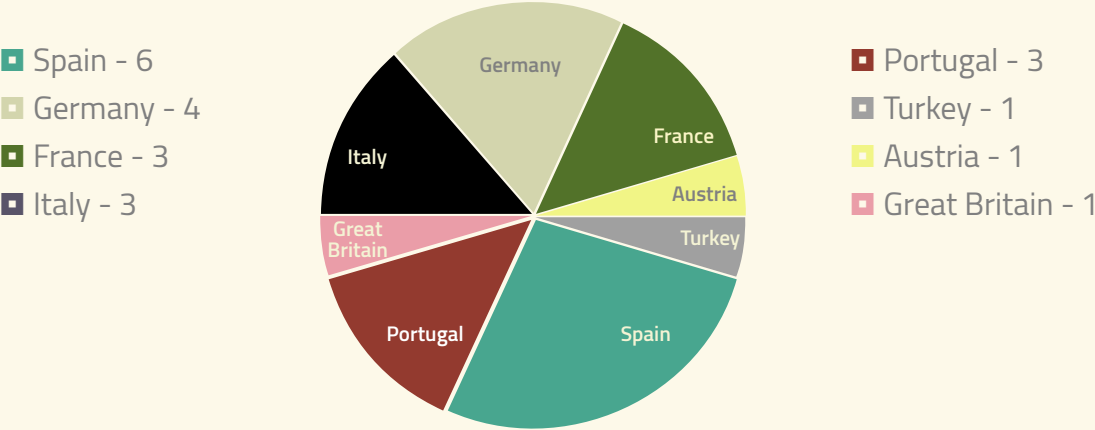
International co-supervision agreements for UNITBV doctoral students: 12 (including 2 within the CHORAL project of the UNITA Alliance).

UNITBV supports the international mobilities of doctoral students for study, research, or practical training.

Erasmus+ mobility of UNITBV doctoral students

DOCTORAL FIELD	SHORT-TERM MOBILITY (UNDER 30 DAYS)	LONGO-TERM MOBILITY (OVER 30 DAYS)
Computers and Informational Technology	1	4
Philology	1	3
Finance	2	
Computer Science		
Automotive Engineering		
Materials Engineering	2	
Environmental Engineering		
Systems Engineering		
Civil Engineering and Building Services		
Electrical Engineering		
Electronics, Telecommunications and Informational Technologies		1
Forest Engineering		1

Industrial Engineering		
Mechanical Engineering	2	
Management and Engineering		
Management		
Marketing		
Mathematics		
Mechatronics and Robotics		
Medicine		2
Music		1
Forestry	1	1
Sociology		
Science of Sport and Physical Education		
	9	13



UNITBV grants for doctoral students' external mobility

DOCTORAL FIELD	SHORT-TERM MOBILITY (UNDER 30 DAYS)	LONGO-TERM MOBILITY (OVER 30 DAYS)
Computers and Informational Technology	2	
Philology	3	
Finance	1	
Computer Science		
Materials Engineering		
Materials Engineering		
Environmental Engineering		
Systems Engineering		
Civil Engineering and Building Services		
Electrical Engineering	1	
Electronics, Telecommunications and Informational Technologies	3	
Forest Engineering	1	
Industrial Engineering	2	
Inginerie mecanică		
Inginerie și management		
Management		
Marketing	2	

Mathematics	1	
Mechatronics and Robotics		
Medicine	2	
Music	2	
Forestry	1	1
Sociology		
Science of Sport and Physical Education	1	
	22	1

Total: 23 temporary external mobility grants for doctoral studies or internships (from own revenues) – 242,050 lei.



EVENTS

DoCo 2024 Doctoral Conference

The first edition of the annual conference dedicated to doctoral students, organized at Sergiu T. Chiriacescu Conference Aula, June 26 – 27, 2024.

Plenary conferences:

- Dr. George Tsatsaronis, Vice President of Elsevier: Research in the Era of Artificial Intelligence: Risks or/and Benefits?
- Dr. Henrik Rudolph, Editor-in-Chief of Applied Surface Science (Elsevier): How to successfully contribute to the world of scientific publishing
- Dr. Sorin Cotofana, Politehnica University Bucharest, Delft University of Technology, Netherlands: Spin Wave Based Computing: The Road from Gates to Circuits

Presentation and debate:

- Dr. Oana Voloaca, CeGaT, Germany: Genomic Revolution: Innovative Research through Next-Generation Sequencing.

Workshops:

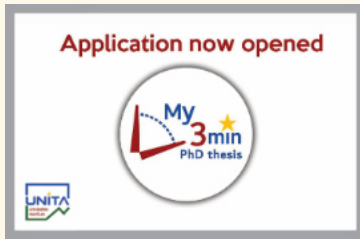
- Dr. George Gunnesch-Luca, University of Bucharest, Friedrich-Alexander University Erlangen-Nürnberg: Workshop in Statistics: Introduction to Bayesian Inference.
- UNITBV Academic Writing Centre: How do you write so that everyone will listen? - 2 parallel workshops: in Romanian and English



Organization of workshops, conferences, meetings, seminars, discussions, round tables, summer schools, etc.

Organization of professional training and education courses.

AFCO 2024 – Graduates in Front of Companies – 12th edition, Section XI – doctoral studies: 23 participating doctoral students.



International competition within the UNITA Doctoral Network – My 3-minute PhD thesis – 2 UNITBV doctoral students qualified for the final stage in Pau, France.

